

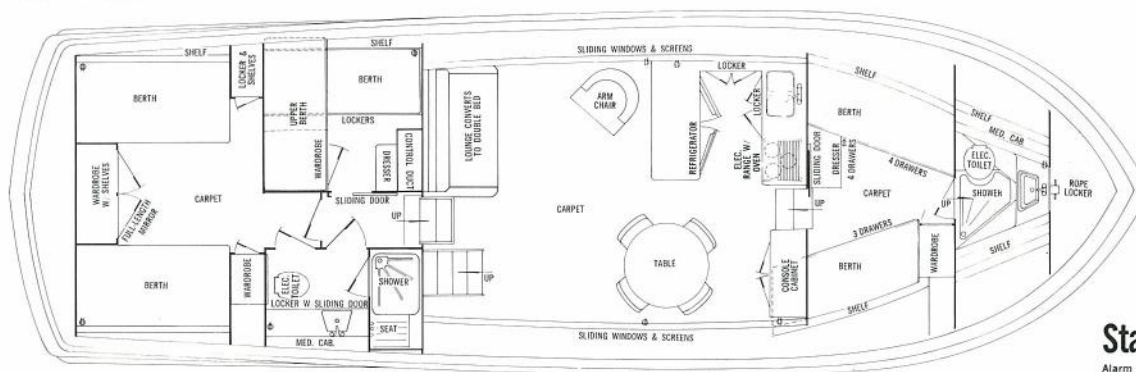
Specifications and Standard Equipment

PROUDEST ACHIEVEMENT IN AMERICAN BOATING:

CHRIS-CRAFT LUXURY YACHTS

The ultimate in design, luxury, strength and electronic advancement begins and ends with the superb yachts shown here — whether a fiberglass Commander, an aluminum Roamer Riviera, or a wood-hulled Constellation. The most sophisticated communication and navigation equipment ever offered in American power cruising — the Integrated Marine Electronics System — is furnished as standard equipment. Components include 150-watt, AM radio telephone, VHF radio telephone, dual range depth sounder, automatic direction finder, automatic pilot, and in several models, radar. Fiberglass yachts embody a host of technological advances — resilient, yet diamond-hard gelcoats, Structokore for virtually indestructible cabin tops and decks, and Duoglas lamination for precision thickness and maximum strength. The aluminum Roamer Riviera provides a light hull for maximum performance, yet a strong hull for maximum security. The classic Constellation displays the world-famed Chris-Craft double-planked bottom and batten seam side construction for the finest wood hull yet devised. Interiors for each are breathtakingly lovely — as you would expect from the gifted touch of noted decorators. The epitome of the boat builders' art — regardless of material — a Chris-Craft luxury yacht will satisfy your every desire for the ultimate enjoyment the boating world can offer.

47' Commander



Specifications

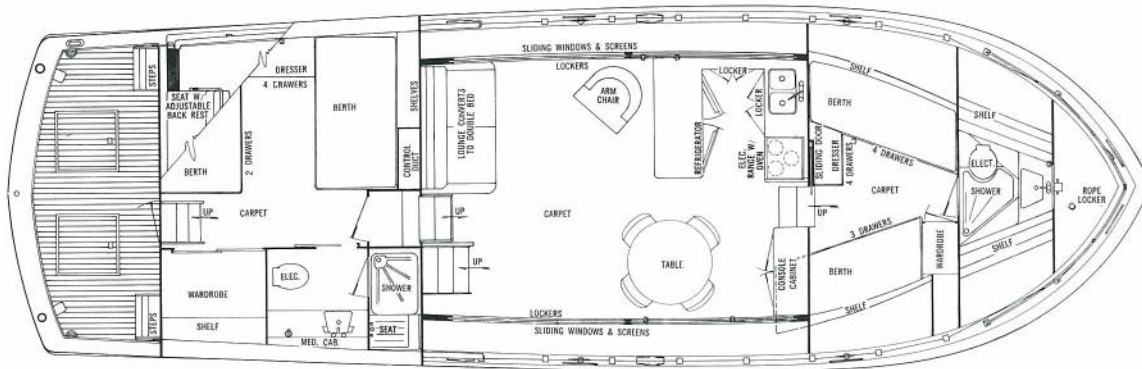
Sleeping Capacity . . . 6-8
 Length . . . 47'-0"
 Beam . . . 15'-0"
 Draft . . . 38"
 Freeboard, forward . . . 89½"
 Freeboard, aft . . . 70"
 Height from waterline (clearance)
 with mast down . . . 12'-11½"
 with mast up . . . 15'-4½"

to top of optional command
 bridge . . . 16'-0½"
 Weight (lbs. displacement, est.) . . .
 31,127
 Headroom . . . 6'-4"
 Fuel Capacity, gallons . . . 350
 Fresh-water Capacity, gallons . . . 80
 Forward, Side and Aft Decks . . .
 Fiberglass

Standard Equipment

Alarm System, engine oil and water, audible and visual
 Anchor, Line, Chocks and Deck Pipe
 Battery Disconnect Switches
 Battery Paralleling Switch
 Bedspreads, aft stateroom
 Bilge Blower
 Bilge Pumps, automatic (2)
 Boat Hook, mounted
 Bow Pole
 Carpeting
 Chair, upholstered, occasional
 AC-DC Circuit Breaker Fusing
 Compass, 5" illuminated
 Deck Hardware including Mooring Bitts and Tow Post
 Deck Hatch, forward with vent
 Deck Hatch, aft with dead light
 Deck Lines, nylon
 Dockside Wiring 115V AC, 30 amp 3-wire inlets port and starboard with shore cable, adapter and ample 3-wire cabin outlets
 Draperies
 Electronics: Installation includes Depth Sounder, VHF FM 25-watt Radio-Telephone, 150-watt AM Radio-Telephone, Automatic Pilot, Automatic Direction Finder, Electronic Hailer, Engine Shielding, Antennas, Radio Ground, Transducer, Custom Cabling and Back-Lighted Night-Adapted Panels
 Fire Extinguishers (3) and Automatic CO2 System in engine room
 Fog Bell
 Fresh Water Pressure System, Hot and Cold
 Fuel Filters
 Fuel Gauges
 Galley with Stainless Steel Sink, 7 cu. ft. Electric Refrigerator and 4.5 cu. ft. F freezer with Automatic Ice Cube Maker and 3-burner Electric Range with oven, rotisserie and stove cover
 Generator, 115/230V AC 10 kw (12.5 kw if diesel) with 2 Remote State Stations, Automatic Starting and Fresh Water Cooling
 Handrails on cabin top, bow, side and aft decks
 Hardtop extended with Ventilating Windshield and Sliding Glass Side Shields
 Helmsman Seat, adjustable
 Horn, electric, dual trumpet
 Lazaret Locker with flush deck hatch
 Life Preservers (6-8)
 Lounge, converts to double bed
 Mast with Anchor Light
 Mirrors in Master Stateroom, Salon and Lavatories
 Mullies
 Navigation Lights, International
 Rectifier, 40 amp battery charging, automatic
 Rudder Angle Indicator
 Screens
 Showers (2)
 Stern Pole and Ensign
 Stereo Tape Player
 Sun Lounge, with cushions, forward deck
 Table & 4 Chairs
 Toilets, electric (2)
 Trim Control with Indicators
 Tubing and Wiring installed for air conditioning
 Vanity with seat (single stateroom model only)
 Weather Cloths
 Windshield Wipers (3)
 Zincs, electrolytic

47' Commander with Fishing Cockpit



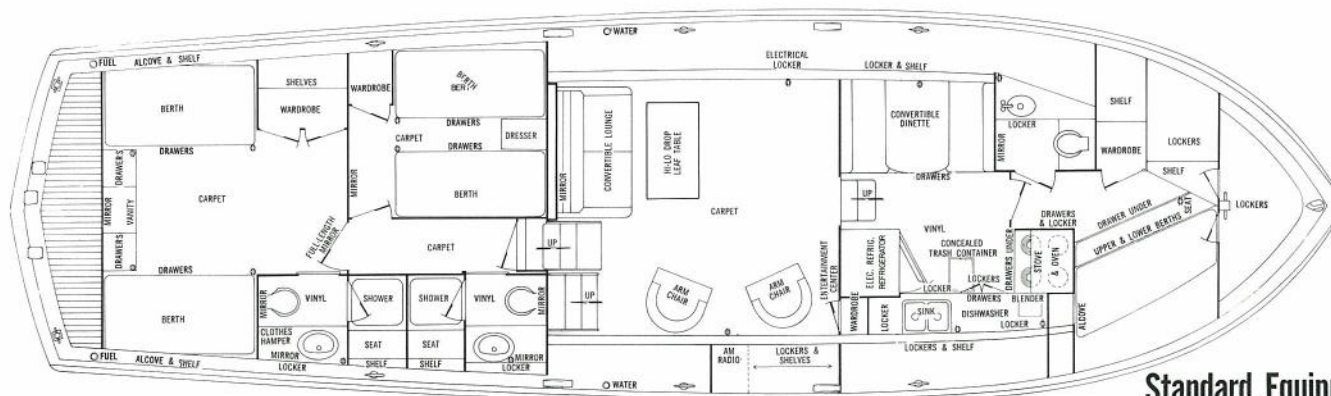
Specifications

| | |
|---|---|
| Length . . . 47'-0" | to top of command bridge . . . 15'-11" |
| Beam . . . 15'-0" | Weight (lbs. displacement, est.) . . . 31,600 |
| Draft . . . 38" | Headroom . . . 6'-4" |
| Freeboard, forward . . . 89½" | Fuel Capacity, gallons . . . 350 |
| Freeboard, aft . . . 55" | Fresh-water Capacity, gallons . . . 80 |
| Height from waterline (clearance) with mast up . . . 17'-2" | Forward and Side Decks . . . Fiberglass |
| | Cockpit Deck . . . Vinyl |
| | Aft Deck and Cockpit Coamings . . . Teak |

Standard Equipment

Alarm System, engine oil and water, audible and visual
Anchor, Line, Checks and Deck Pipe
Battery Disconnect Switches
Battery Paralleling Switch
Bedsprad
Bilge Blower
Bilge Pumps, automatic (2)
Boat Hook, mounted
Bow Pole
Carpeting
Chair, upholstered occasional
Circuit Breaker Fusing
Compasses, illuminated, 3" bridge, 5" lower station
Deck Hardware, including Mooring Bitts and Tow Post
Deck Hatch, forward, with vent
Dock Lines, nylon
Dockside Wiring 115V AC, 30 amp, 3-wire inlets, port and starboard with shore cable, adapter and ample 3-wire cabin outlets
Command Bridge with dual controls,
Helmsman Seat (adjustable) Weather Cloths, Depth Sounder and Remotes for automatic pilot, electronic hailer and both radio-telephones (see electronics below)
Draperies
Electronics: Installation includes two depth sounders, VHF FM 25-watt Radio, Telephone, 150-watt AM Radio-Telephone, Automatic Pilot, Automatic Direction
Finder, Electronic Hailer, Engine Shielding (gas engines only), Antennas, Radio Ground, Transducers, Custom Cabling and Back-Lighted Night-Adapted Panels
Fire Extinguishers (3) and Automatic CO2 System in engine room
Fog Bell
Fresh Water Pressure System, Hot and Cold Fuel Gauges
Fuel Filters
Galley with Stainless Steel Sink, 6.7 cu. ft. Electric Refrigerator, 4.5 cu. ft. Freezer with Ice Cube Maker and 3-burner Electric Range with oven, rotisserie and stove cover
Generator, 115/230V AC 10 kw gasoline, 12.5 kw diesel with 2 Remote Start Stations, Automatic Starting and Fresh Water Cooling
Handrails on cabin top, bow and side decks
Hardtop with Ventilating Windshield and Sliding Glass Side Shields
Helmsman Seat, adjustable
Horn, electric dual trumpet
Life Preservers (6)
Lounge, converts to double bed
Mast, flag
Mirrors in master stateroom, salon and lavatories
Mufflers
Navigation Lights, International
Rectifier, 40 amp battery charging, automatic
Rudder Angle Indicator
Seat, cushioned, facing aft
Screens
Showers (2)
Stern Pole and Ensign
Stereo Tape Play
Sun Lounge, with cushions, forward deck
Toilets, electric (2)
Trim Control with Indicators
Tubing and Wiring installed for air conditioning
Weather Cloths
Windshield Wipers (3)
Windshield Opener, electric
Zincs, electrolytic

55' Commander



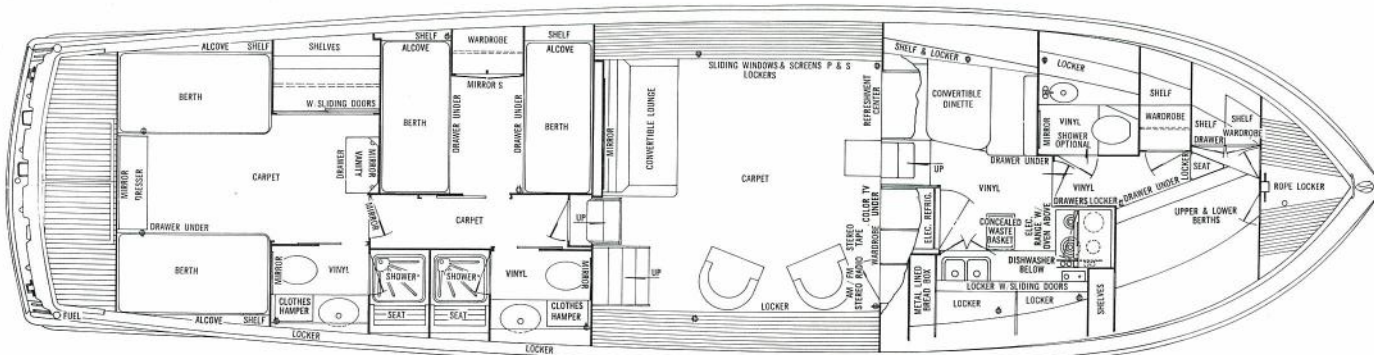
Specifications

| | |
|---|---|
| Length . . . 55'-0" | to top of optional command bridge . . . 16'-8¾" |
| Beam . . . 16'-5¾" | Weight (lbs. displacement, est.) . . . 49,300 |
| Draft . . . 45" | Headroom . . . 6'-4" |
| Freeboard, forward . . . 7'-9½" | Fuel Capacity, gallons . . . 570 |
| Freeboard, aft . . . 5'-11" | Fresh-water Capacity, gallons . . . 150 |
| Height from waterline (clearance) with mast up . . . 16'-9" | Forward, Side and Aft Decks . . . Fiberglass |
| with mast lowered . . . 15'-11" | |

Standard Equipment

Air Compressor
Alarm System, engine oil and water, audible and visual
Anchor, Line, Checks and Deck Pipe
Battery Disconnect Switches
Battery Paralleling Switch
Bedsprads
Bilge Blower
Bilge Pumps, automatic (2)
Blender, electric, food and beverage
Boat Hook, mounted
Bow Pole
Carpeting
Chairs, upholstered occasional (2)
Circuit Breaker Fusing
Compass, illuminated, 6"
Deck Hardware, including Mooring Bitts and Tow Post
Deck Hatch, aft
Deck Hatch, forward, with vent
Dishwasher
Dock Lines, nylon
Dockside Water Connections, port and starboard
Dockside Wiring 115/230V AC single phase 50 amp, inlets port and starboard with 2 shore cables, adapters and ample 3-wire 110V cabin outlets
Draperies
Electronics: Installation includes Decca 101 Radar, Depth Sounder, VHF FM 25-watt Radio-Telephone, 150-watt AM Radio Telephone, Automatic Pilot, Automatic Direction Finder, Electronic Hailer,
Antennas, Radio Ground, Transducer Custom Cabling and Back-Lighted Night-Adapted Panels
Fire Extinguishers and Automatic CO2 System in engine room
Fog Bell
Fresh Water Pressure System, Hot and Cold Fuel Filters
Fuel Gauges
Galley Exhaust Fan
Galley with Stainless Steel Sink, 16.6 cu. ft. Electric Refrigerator-Freezer with Automatic Ice Cube Maker, 4-burner Electric Range and eye-level Oven
Garbage Disposal
Generator, diesel 115/230V AC 15kw with 2 Remote Start Stations and Fresh Water Cooling
Handrails on cabin top and bow, Mahogany handrails with gates, side and aft decks
Hardtop extended with Ventilating Windshield and Sliding Glass Side Shields
Helmsman Seat, adjustable
Horn, air, dual trumpet
Life Preservers (10)
Mast, with anchor light
Mirrors in Staterooms, Salon and Lavatories
Mufflers
Navigation Lights, International
Rectifier, 3V 40 amp battery charging, automatic
Rudder Angle Indicator
Searchlight, 10", remote control
Screens
Showers (2)
Stern Pole and Flag
Stereo Radio, AM, FM, FM Multiplex
Stereo Tape Play
Sun Lounge with cushions, forward deck
Table, hi-to, drop leaf
Television, color
Toilets, electric (3)
Trim Control with Indicators
Tubing and Wiring Installed for air conditioning
Vanity, with seat
Weather Cloths, cockpit, rail to deck
Weather Cloths, side and aft curtains, dacron and clear plastic, to enclose aft deck
Windshield Opener, electric
Windshield Washers
Windshield Wipers, air-driven (3)
Zincs, electrolytic

57' Constellation



Specifications

Sleeping Capacity . . . 10
 Length . . . 57'-0"
 Beam . . . 15'-0"
 Draft . . . 3'-11½"
 Freeboard, forward . . . 7'-6½"
 Freeboard, aft . . . 5'-5¾"
 Height from waterline (clearance
 with mast down . . . 15'-2½"
 with mast up . . . 15'-6¾"

to top of optional
 command bridge . . . 16'-1"
 Weight (lbs. displacement, est.) 46,525
 Headroom . . . 6'-4"
 Fuel Capacity, gallons . . . 550
 Fresh-water Capacity, gallons . . . 150
 Forward, Side and Aft Decks . . . Teak
 Bottom, double planked, Philippine
 Mahogany outer planking . . . 1"
 Hullsides, batten-seamed Philippine
 Mahogany . . . ¾"

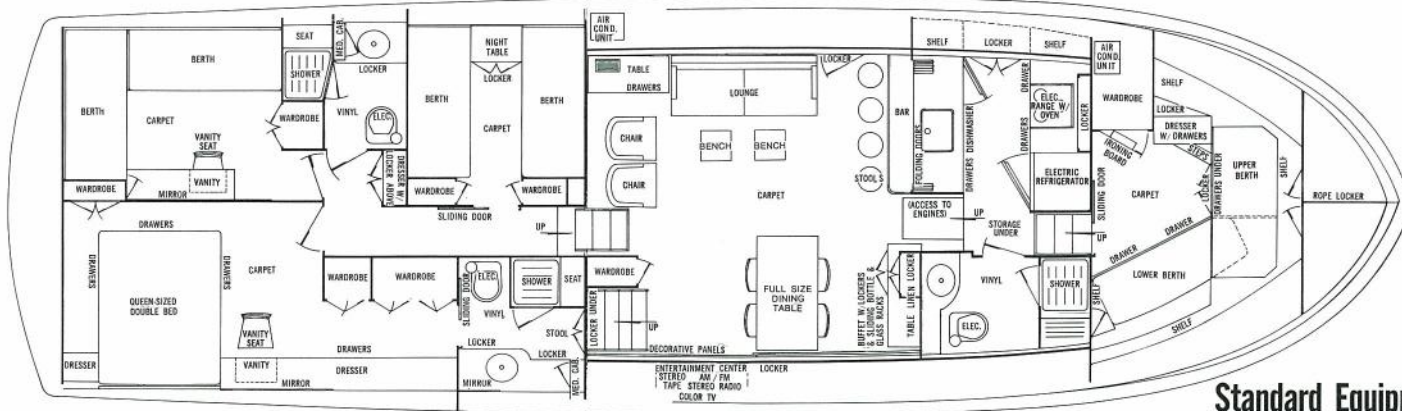
Standard Equipment

Air Compressor
 Alarm System, engine oil and water, audible and visual
 Anchor, Line, Chocks and Deck Pipe
 Battery Disconnect Switches
 Battery Paralleling Switch
 Bedsprads (Aft Staterooms only)
 Bilge Blower
 Bilge Pumps, automatic (2)
 Blender, electric, food and beverage
 Boat Hook, mounted
 Bow Pole
 Carpeting
 Chairs, upholstered occasional (2)
 Circuit Breaker Fusing AC-DC
 Compass, illuminated, 6"
 Deck Hardware, including Mooring Bits and Tow Post
 Deck Hatch, aft, with head light
 Deck Hatch, forward, with vent
 Dishwasher
 Dock Lines, nylon
 Dockside Water Connections, port and starboard
 Docks Wiring 115/230V AC Single Phase
 50 amp, Inlet Port and Starboard with
 2 Shore cables, adapters and ample
 3-wire 115V cabin outlets
Draperies
 Electronics: Installation includes Depth
 Sounder, VHF FM 25-watt Radio-
 Telephone, 150-watt AM Radio-Telephone,
 Automatic Pilot, Automatic Direction
 Finder, Electronic Hailer, Antennas,
 Radio Ground, Transducer, Custom
 Cabling and Back-Lighted Night-Adapted
 Panels.

3 Fire Extinguishers & CO2 System
 Fog Bell
 Fresh Water Pressure System, Hot and Cold
 Fuel Filters
 Fuel Gauges
 Galley Exhaust Fan
 Galley with Stainless Steel Sink, 19.92 cu. ft.
 Electric Refrigerator-Freezer with
 Automatic Ice Cube Maker and 4-burner
 Electric Range w/Eye Level Oven
 Garbage Disposal
 Generator, diesel 115/230V AC 15 kw with
 2 Remote Start Stations and Fresh Water
 Cooling
 Handrails on cabin top and bow. Mahogany
 handrails with Gates, side and aft decks
 Handtop extended with Ventilating Windshield
 and Sliding Glass Side Shields
 Helmsman Seat, adjustable
 Horn, air, dual trumpet
 Lazaret Locker with flush deck hatch
 Life Preservers (10)
 Mast, with Anchor Light
 Mirrors in staterooms, salon and lavatories
 Mufflers
 Navigation Lights, International
 Rectifier, 32V 40 amp battery charging,
 automatic
 Rudder Angle Indicator
 Searchlight, 10", remote control
 Screens
 Showers (2)
 Stern Pole and Ensign
 Stereo Radio, AM, FM, FM multiplex
 Stereo Tape Player

Sun Lounge with cushions, forward deck
 Table, hi-lo, drop leaf
 Television, color
 Toilets, electric (3)
 Trim Control with Indicators
 Tubing and Wiring Installed for air
 conditioning
 Vanity, with seat
 Weather Cloths, cockpit rail to deck
 Windshield Opener, electric
 Windshield Washers
 Windshield Wipers, air-driven (3)
 Worm Shoe
 Zincs, electrolytic

58' Roamer Riviera



Specifications

Sleeping Capacity . . . 6-8
 Length . . . 58'-0"
 Beam . . . 17'-3"
 Draft . . . 4'-8"
 Freeboard, forward . . . 7'-11½"
 Freeboard, aft . . . 5'-8½"
 Height from waterline clearance
 with mast down . . . 13'-11½"
 with mast up . . . 16'-3½"

Weight (lbs. displacement, est.) . . .
 68,500
 Headroom . . . 6'-4"
 Fuel Capacity, gallons . . . 1,000
 Fresh-water capacity, gallons . . . 270
 Forward, Side and Aft Decks . . . Teak
 Bottom and Hull Sides . . .
 Aluminum 5/16"
 Plating Type 5086
 Fender Rails . . . Aluminum Capped
 with Stainless Steel Molding

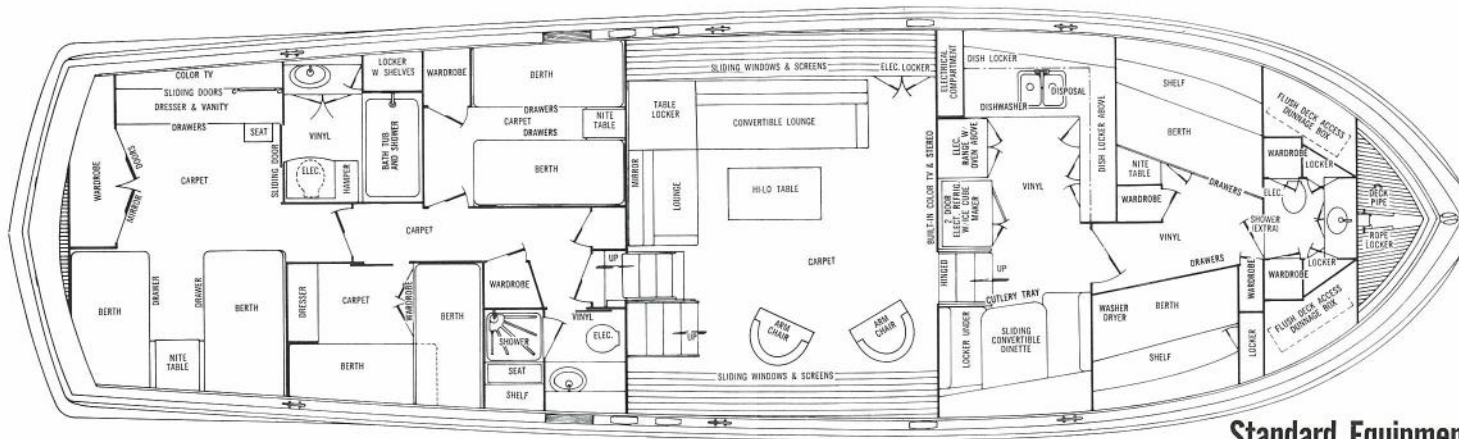


Standard Equipment

Air Compressor
 Air Conditioning with reverse cycle heating
 Alarm System, engine oil and water,
 audible and visual
 Anchor, Line, Chocks and Deck Pipe
 Battery Disconnect Switches
 Battery Paralleling Switch
 Bedsprads, custom fitted
 Bilge Blower
 Bilge Pumps, automatic (4)
 Boat Hook, mounted
 Bow Pole
 Buffet, built-in, salon
 Buffet, Ceramic Tile-Topped, Serving
 Cabinet in Dining Room, Built-in
 Can Opener, electric
 Capac Corrosion Eliminator
 Carpeting
 Chairs, Custom Plexiglas, Upholstered (2)
 Chairs in Staterooms
 Circuit Breaker Fusing
 Clock, transistorized, battery-powered
 Compass, illuminated, 6"
 Custom Door and Drawer Pulls
 Deck Hardware, including Mooring Bits and
 Tow Post
 Deck Hatches, aft, flush (2)
 Deck Hatch, forward, with vent
 Dishwasher
 Dock Lines, nylon
 Dockside Water Connections, port and
 starboard
 Docks Wiring, 115/230V AC Single
 Phase 50 amp, Inlets Port and Starboard
 with 2 shore cables, adapters and ample
 110V cabin outlets

Draperies
 Electronics: Installation includes Depth
 Sounder, VHF FM 24-watt Radio-
 Telephone, 150-watt AM Radio-Telephone,
 Automatic Pilot, Automatic Direction
 Finder, Electronic Hailer, Antennas, Radio
 Ground, Transducers, Custom Cabling and
 Back-Lighted Night-Adapted Panels
 Exhaust Fans in lavatories
 Faucet Sets, Decorative Porcelain w/Matching
 Basins
 Fire Extinguishers (3) and Automatic CO2
 System in engine room
 Fog Bell
 Fresh Water Pressure System, Hot and Cold
 Fuel Filters
 Fuel Gauges
 Galley with Sink, Garbage Disposal, 12 cu. ft.
 Electric Refrigerator-Freezer, additional
 4.5 cu. ft. Freezer under counter with
 Ice Cube Maker and 3-burner Electric
 Range with oven and rotisserie, Blender,
 electric, food and beverage
 Generator, diesel 115/230 V AC, 15 kw with
 2 Remote Start Stations and Fresh
 Water Cooling
 Hardtop extended with Wing Doors,
 Ventilating Windshield and Sliding Glass
 Side Shields
 Helmsman Seat with footrest
 Horn, air, dual trumpet
 Ironing Board, built-in
 Lamp, Custom Table and Wall-Mounted
 Light Fixtures
 Life Preservers (8-10)
 Luggage Storage Compartment Below Decks

Mast, with anchor light
 Mirrors in Staterooms, Salon and Lavatories
 Mufflers
 Navigation Lights, International
 Range Hood, ductless with Fan, Filter
 and Light
 Rectifier, 40 amp battery charging, automatic
 Rudder Angle Indicator
 Searchlight, 10"
 Screens
 Showers (3)
 Stern Pole and Ensign
 Stereo Radio, AM, FM, FM Multiplex
 Stereo Tape Player
 Stools, Bar Type w/ Upholstered Seats (4)
 Sun Lounge with cushions, forward deck
 Table, cocktail with Nesting Stools
 Table, Home-Size Dining w/16" Extension Leaf
 Television, color
 Toilets, electric Monomatic (3)
 Trim Control with Indicators
 Vanities with seats (2)
 Washer-Dryer
 Weather Cloths, fiberglass, cockpit rail to deck
 Windshield Opener, electric
 Windshield Washers
 Windshield Wipers, air-driven (3)

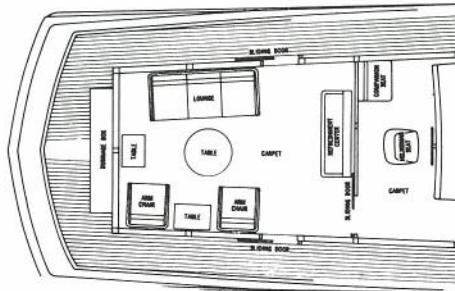


Specifications

Sleeping Capacity . . . 11
 Length . . . 60'-10"
 Beam . . . 18'-0"
 Draft . . . 4'-7"
 Freeboard, forward . . . 8'-6½"
 Freeboard, aft . . . 6'-10"
 Height from waterline (clearance)
 with mast down . . . 17'-1"
 with mast up . . . 18'-10¾"

to top of optional command
 bridge . . . 22'-13¼"
 Weight (lbs. displacement, est.) . . .
 60' Commander . . . 80,235
 60' Motor Yacht . . . 83,170

Headroom . . . 6'-4"
 Fuel Capacity, gallons . . . 1,000
 Fresh-water Capacity, gallons . . . 300
 Forward, Side and Aft Decks . . .
 Fiberglass



Standard Equipment

Air Compressor
 Air Conditioning with reverse cycle Heating
 Alarm System, engine oil and water,
 audible and visual
 Anchor, Chain, Deck Pipe, Hawse Pipe
 and Electric Windlass
 Bar, aft deck, with Sink, Ice Maker, Storage
 Bathroom with Shower
 Battery Disconnect Switches
 Battery Paralleling Switch
 Bedspreads
 Bilge Blower
 Bilge Pumps, automatic (3)
 Blender, electric, food and beverage
 Boat Hook, mounted
 Bow Pole
 Carpeting
 Chairs, upholstered occasional (2)
 Circuit Breaker Fusing
 Compass, illuminated, 6"
 Covers for horns, searchlight and forward
 deck seat
 Deck Hardware, including Mooring Bits
 Deck Hatch, aft
 Deck Hatch, forward, with vent
 Dishwasher
 Dock Lines, nylon
 Dockside Water Connections, port, starboard
 Docksiding Wiring, 115/230V AC Single Phase
 50 amp, Inlets Port and Starboard with
 2 shore cables, adapters and ample
 3-wire 110V cabin outlets
 Draperies
 Electronics: Installation includes Decca 101
 Radar, Depth Sounder, VHF FM 25-watt

Radio-Telephone, 150-watt AM Radio-
 Telephone, Automatic Pilot, Automatic
 Direction Finder, Electronic Hailer,
 automatic
 Antennas, Radio Ground, Transducers,
 Custom Cabling and Back-Lighted
 Night-Adapted Panels
 Exhaust Fan, forward lavatory
 Fire Extinguishers and Automatic CO2
 System in engine room
 Fog Bell
 Fresh Water Pressure System, Hot and Cold
 Fuel Filters
 Fuel Gauges
 Galley Exhaust Fan
 Galley with Stainless Steel Sink, 19.92 cu. ft.
 Electric Refrigerator-Freezer with Ice
 Cube Maker, 4-burner Electric Range
 and eye-level Oven
 Garbage Disposal
 Generators, 2 diesel 115/230V AC 15 kw
 with 2 Remote Start Stations and Fresh
 Water Cooling
 Handrails on cabin top and bow
 Mahogany handrails with gates, side, aft decks
 Hardtop extended with Ventilating
 Windshield and Sliding Glass Side Shields
 Helmsman Seat, adjustable and Companion
 Seat, both with footrests
 Horn, air, dual trumpet
 Life Preservers (12)
 Lounge, converts to double bed
 Mast, with Anchor Light
 Mirrors in Staterooms, Salon and Lavatories
 Mufflers
 Navigation Lights, International

Raw Water Wash-Down Outlet with pump
 Rectifier, 32V 40 amp battery charging,
 automatic
 Rudder Angle Indicator
 Searchlight, 10", remote control
 Screens
 Showers (2)
 SternPole and Ensign
 Stereo Radio, AM, FM, FM Multiplex
 Stereo Tape Player
 Sun Lounge with cushions, forward deck
 Table, hi-to, drop leaf
 Telephone Jacks (6)
 Televisions, color (2)
 Toilets, electric (3)
 Trim Control with indicators
 Vanity, with seat
 Washer-Dryer
 Weather Cloths, fiberglass, cockpit rail to deck
 Weather Cloths, enclosure for cockpit,
 dacron and clear plastic
 Windshield Opener, electric
 Windshield Washers
 Windshield Wipers, air-driven (3)
 Zincs, electrolytic