

# *Chris-Craft Luxury Yachts*



# Chris-Craft Luxury Yachts

There is an almost indefinable difference that sets Chris-Craft luxury yachts apart . . . and makes them the leaders. Excitement in the midst of elegance. Great sport in the midst of comfort. A way of entertaining one's friends. A way of living!

How does Chris-Craft make all this possible? Start with design that's totally distinctive. Then move to the great new advances to be found only in a Chris-Craft.

The most significant advance in Chris-Craft yachts is in electronic control. Described later in this catalog, it is called the Advanced Integrated Marine Electronics System, and it is the most sophisticated—yet easy to operate—electronic system ever offered to yachtsmen.

Nothing has been spared to make the interiors of these yachts the most luxurious on the water. From carpeting to drapes to furniture to living space, everything is perfectly planned for gracious living.

One of the great advantages to the buyer of a Chris-Craft luxury yacht is the wide selection of models in fiberglass, aluminum or wood.



# 47' Commander



# 47' Commander

This fiberglass classic embodies all the characteristics of larger luxury yachts. In spaciousness. In privacy. In every respect. There are accommodations for six or eight, depending upon whether the owner selects the single or double stateroom version.

In both models, the owner's quarters are huge and plush. The dressing areas are exceptionally large, with enough room to move about freely. Both versions have shower rooms (The single stateroom has a vanity and wash basin separate from the head).

Forward, the main salon has been designed with the galley and dinette on the same level. The result is one vast carpeted area for convenience and enjoyment.

The forward stateroom features twin berths, its own toilet and shower and lots of shelf and storage space.

A galley feature, impressive to any woman, is a refrigerator and separate freezer with automatic ice cube maker.

This 47-footer comes standard with the Chris-Craft Advanced Integrated Marine Electronics System. Virtually all the communication and electronic gear the skipper needs — contained in the Command Console.



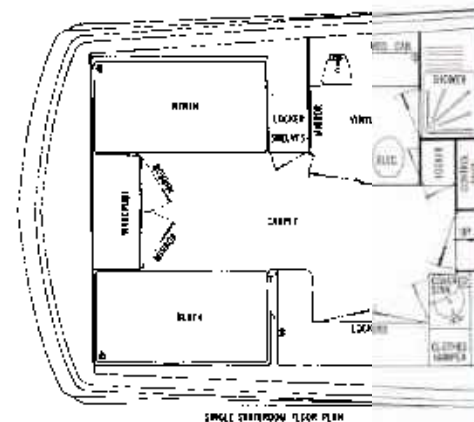
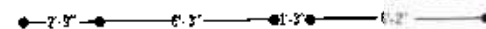
Salon looking aft



Salon, dining area and galley

## SPECIFICATIONS

Sleeping Capacity .....	6-8
Length .....	47'-0"
Beam .....	15'-0"
Draft .....	38"
Freeboard, forward .....	89½"
Freeboard, aft .....	70"
Height from waterline (clearance)	
with mast down .....	12'-11½"
with mast up .....	15'-4½"
to top of optional command bridge .....	16'-0½"
Weight (lbs. displacement, est.) .....	33,000
Fuel Capacity, gallons .....	350
Fresh-water Capacity, gallons .....	80
Forward, Side and Aft Decks .....	Fiberglass



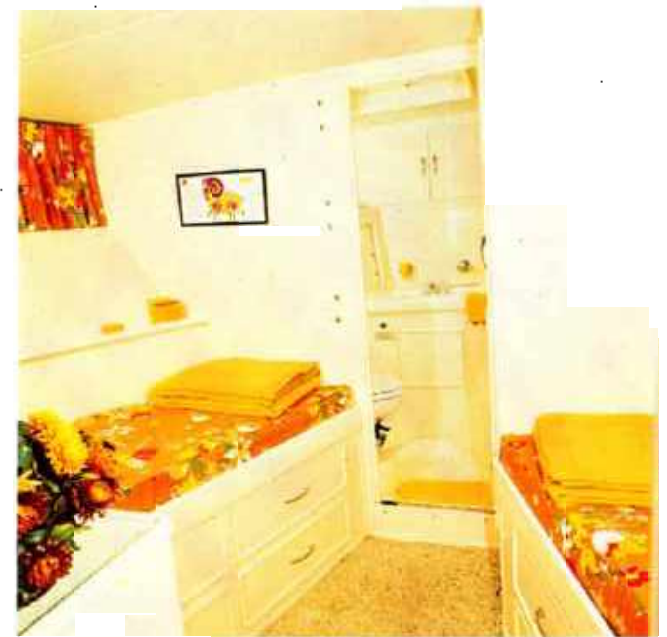




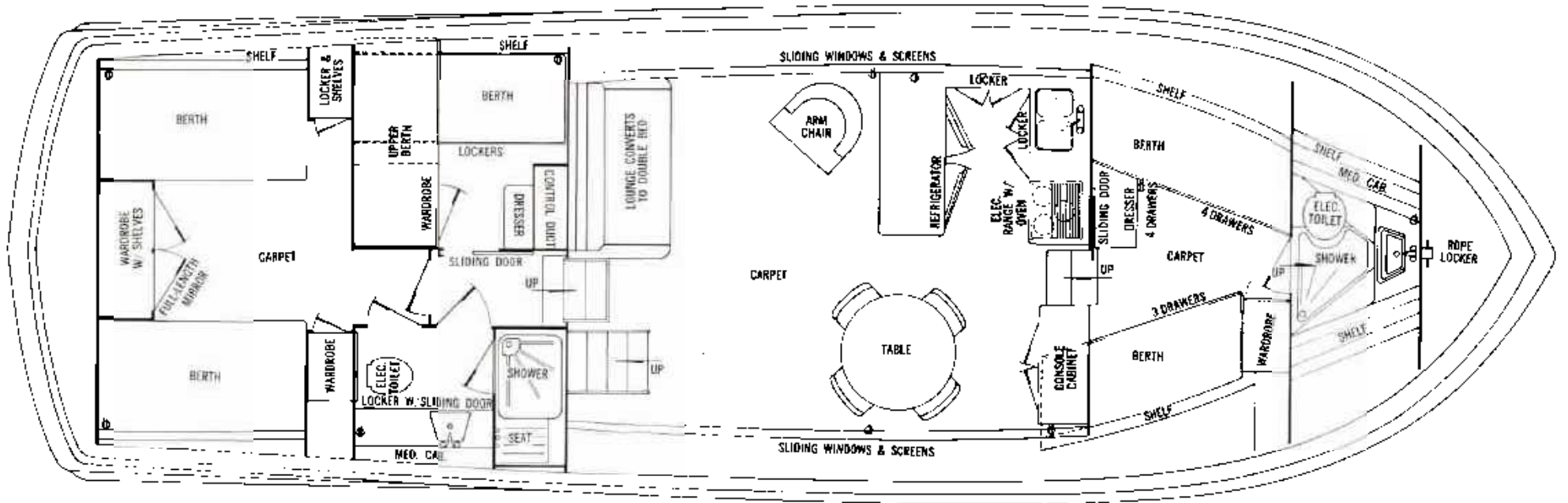
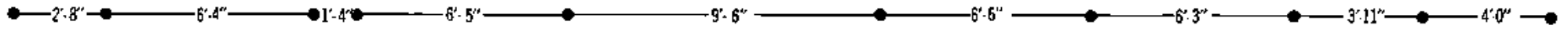
Master stateroom, single stateroom model



Aft lavatory with shower



Forward stateroom and lavatory





## 47' Commander

### STANDARD EQUIPMENT

Alarm System, engine oil and water, audible and visual • Anchor, Line, Chocks and Deck Pipe • Battery Disconnect Switches • Battery Paralleling Switch • Bedspreads, aft stateroom • Bilge Blower • Bilge Pumps, automatic (2) • Boat Hook, mounted • Bow Pole • Carpeting • Chair, upholstered, occasional • Circuit Breaker Fusing • Compass, 5" illuminated • Deck Hardware including Mooring Bitts and Tow Post • Deck Hatch, forward with vent • Deck Hatch, aft • Dock Lines, nylon • Dockside Wiring, 115V AC, 30 amp., 3-wire inlets port and starboard with shore cable, adapter and ample 3-wire cabin outlets • Draperies • Electronics: Installation includes Depth Sounder, VHF FM 25-watt Radio-Telephone, 150-watt AM Radio-Telephone, Automatic Pilot, Electronic Hailer, Engine Shielding, Antennas, Radio Ground, Transducer, Custom Cabling and Back-Lighted Night-Adapted Panels • Fire Extinguishers (3) and Automatic CO2 System in engine room • Fog Bell • Fresh Water Pressure System, Hot and Cold • Fuel Filters • Fuel Gauges • Galley Blower • Galley with Stainless Steel Sink, 6.7 cu. ft. Electric Refrigerator and 4.5 cu. ft. Freezer with Automatic Ice Cube Maker and 3-burner Electric Range with oven, rotisserie and stove cover • Generator, 115/230V AC 10 kw (12.5 kw if diesel) with 2 Remote Start Stations, Automatic Starting and Fresh Water Cooling • Handrails on cabin top, bow, side and aft decks • Hardtop extended with Ventilating Windshield and Sliding Glass Side Shields • Helmsman Seat, adjustable • Horn, electric, dual trumpet • Lazaret Locker with flush deck hatch\* • Life Preservers (6-8) • Lounge, converts to double bed • Mast with Anchor Light • Mirrors in Master Stateroom, Salon and Lavatories • Mufflers • Navigation Lights, International • Rectifier, 40 amp battery charging, automatic • Rudder Angle Indicator • Screens • Showers (2) • Stern Pole and Flag • Stereo Tape Player • Sun Lounge, with cushions, forward deck • Table & 4 Chairs • Toilets, electric (2) • Trim Control with Indicators • Tubing and Wiring Installed for air conditioning • Vanity with seat (single stateroom model only)\* • Weather Cloths • Windshield Wipers (3) • Windshield Opener, electric • Zincs, electrolytic.

\* Not included on Fishing Cockpit Model.



*47' Commander Fishing Cockpit*





# 47' Commander

When fitted out with a fishing cockpit, the 47' Commander is a sportsman's boat. All the superb luxury and electronic features have been retained. But a Command Bridge® has been added. The skipper sits in an adjustable helmsman's chair, his hands on a wheel that tilts up for instant stand-up control. Aft, there's a low transom fishing cockpit.

## SPECIFICATIONS

Sleeping Capacity .....	6
Length .....	47'-0"
Beam .....	15'-0"
Draft .....	38"
Freeboard, forward .....	89½"
Freeboard, aft .....	55"
Height from waterline (clearance)	
with mast up .....	17'-2"
to top of command bridge .....	15'-11"
Weight (lbs. displacement, est.) .....	33,000
Fuel Capacity, gallons .....	350
Fresh-water Capacity, gallons .....	80
Forward and Side Decks .....	Fiberglass
Cockpit Deck .....	Vinyl
Aft Deck and Cockpit Coamings .....	Teak



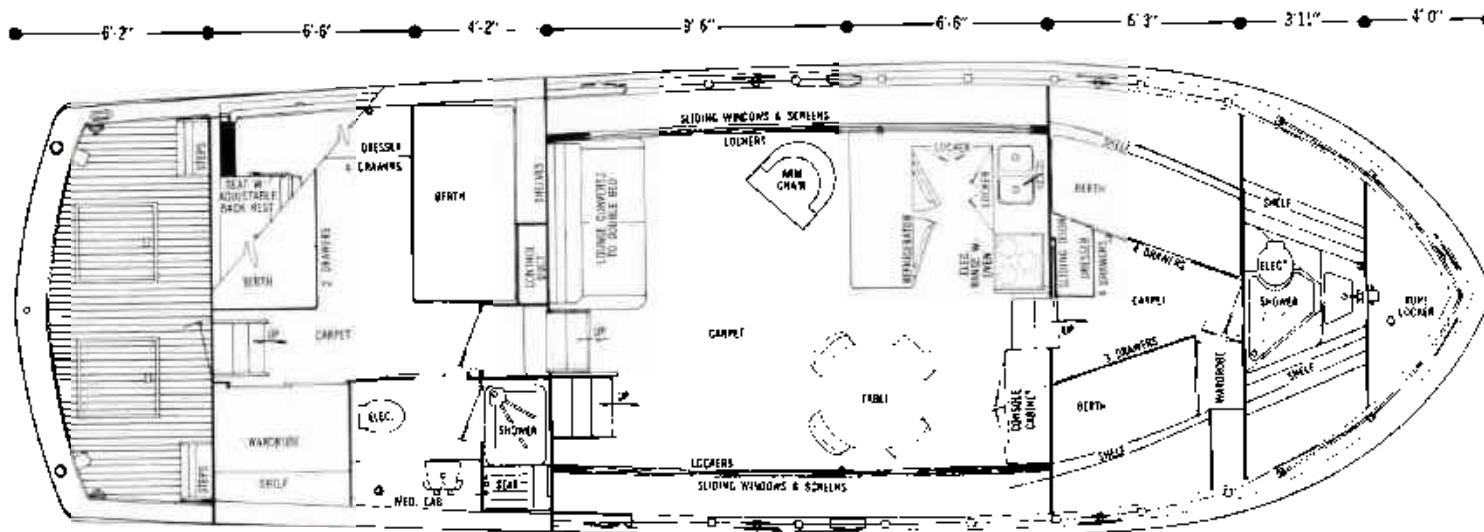
Master stateroom

## STANDARD EQUIPMENT\*

Compasses, illuminated, 3" bridge • Command Bridge with dual controls, Helmsman Seat (adjustable) Weather Cloths, Depth Sounder and Remotes for automatic pilot, electronic hailer and both radio-telephones (see electronics below) • Electronics: Installation includes two

depth sounders • Life Preservers (6) • Mast, flag • Seat, cushioned, facing aft or forward.

\* In addition to Standard Equipment installed on 47' Commander.





# *55' Commander*





## 55' Commander

This 55-foot ten-sleeper is a yacht designed in the magnificent manner. The perfect boat for the demanding owner of pure luxury.

A 16'-5" beam and fiberglass construction give this Commander an amazing amount of living space, all of which has been put to good use.

Forward are upper and lower berths, a large wardrobe, head with room for an optional shower, and shelves and stowage space galore. Perfect for an exceptional crew's quarters or a guest stateroom.

To port, the dining area has room for four and, after dark, converts to private sleeping quarters for two guests. The galley comes standard with a four-burner electric range, oven, dishwasher, double sinks, garbage disposal, and a huge refrigerator/freezer with automatic ice cube maker.

Midships, the salon is furnished with two swivel chairs and a sofa, carpeting, draperies, and an entertainment center, with cabinet-enclosed color TV, AM-FM radio, and stereo tape deck.

Both the guest's and the owner's staterooms aft have their own private heads with showers. The guest stateroom, with twin berths separated by a dresser and a king-size wardrobe, is a beautiful accommodation. But the owner's is truly lavish — two full-size beds, a double wardrobe, drawer space, a vanity with theatrical mirror, and plenty of carpeted walk-around space.

Up on the bridge deck, the Chris-Craft Advanced Integrated Marine Electronics System and Command Console include radar.



Salon looking aft



Salon looking forward

### SPECIFICATIONS

Sleeping Capacity .....	10
Length .....	55'
Beam .....	16'-5"
Draft .....	4'
Freeboard, forward .....	7'-9"
Freeboard, aft .....	5'-
Height from waterline (clearance)	
with mast up .....	16'-
with mast lowered .....	15'-1"
to top of optional command bridge .....	16'-
Weight (lbs. displacement, est.) .....	52,600
Fuel Capacity, gallons .....	400
Fresh-water Capacity, gallons .....	100
Forward, Side and Aft Decks .....	Fiberglass







R. D. McAllister & Son Ltd  
EAST BAY FRONT  
ERIE PA 6507

CHRIS-CRAFT CORPORATION, POMPANO BEACH, FLORIDA 33061

Printed in U.S.A.