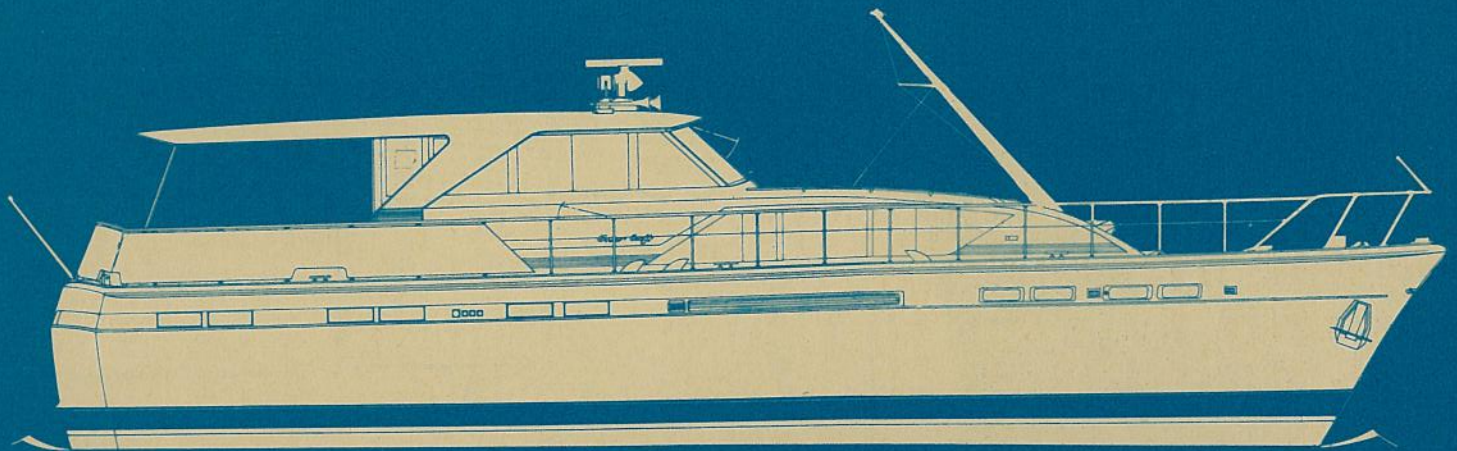


60' Commander



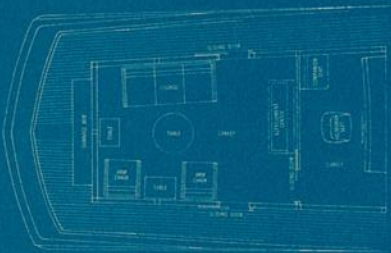
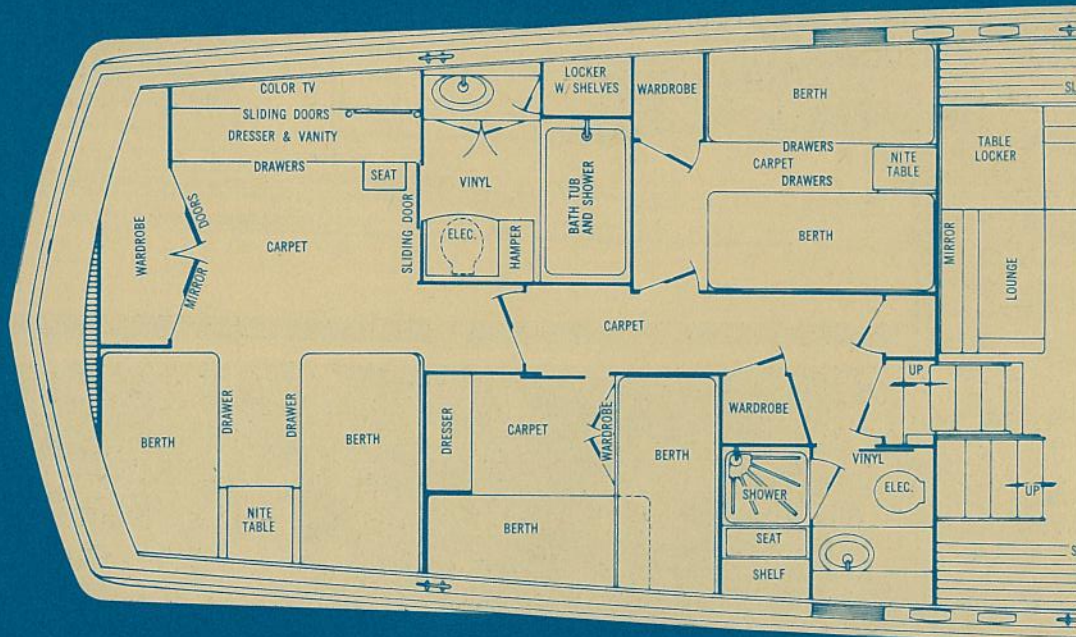
Heralding the beginning of a new yachting era! The culmination of a decade of technological effort now lets Chris-Craft's production team devise the supreme achievement in fiberglass design—the 60 Commander and 60 Commander Motor Yacht! Luxurious accommodations for twelve below decks in three private staterooms and two lavatories aft, a salon amidships and a galley, dinette, lavatory and cruise quarters forward. In the pilot house (an enclosed second salon in the Motor Yacht version), the latest Chris-Craft Trim Controls and advanced Integrated Electronics Package and "space age" Command Console make this vessel a joy to possess. The Regal oyster white of her fiberglass hull and super structure is complimented by the sheen of mahogany and teak. Her wealth of appliances is astounding. She can cruise the wide seas

on 1,000 gallons fuel capacity and 300 gallons of water hitting 21 miles per hour with mighty 478-H.P. General Motor diesels. Available only through Chris-Craft's custom yacht dealers, Chris-Craft's custom yachts sales manager in Florida personally supervises each order and assists you from initial selection of decor and accessories and final sea trials and delivery to you or your captain. For a once in a lifetime luxury cruising discovery, consider the Chris-Craft 60' Commander, the epitome of fiberglass motor yachts.

Chris-Craft

Specifications and Standard Equipment

2'-5" 8'-10" 5'-10" 8'-5"

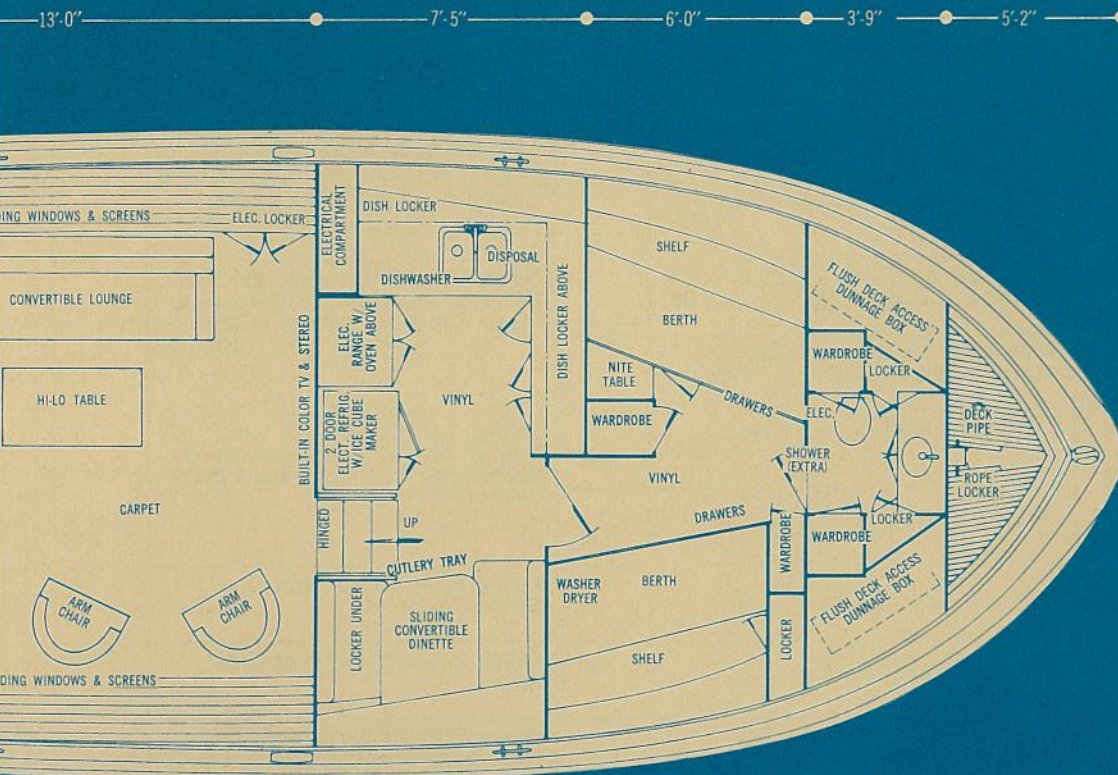


WIDE-ANGLE DECKHOUSE ARRANGEMENT

- Air Compressor
- Air Conditioning with reverse cycle Heating
- Alarm System, engine oil and water, audible and visual
- Anchor, Chain, Deck Pipe, Hawse Pipe and Electric Windlass
- Bar, aft deck, with Sink, ice Maker, Storage
- Bathub with Shower
- Battery Disconnect Switches
- Battery Paralleling Switch
- Bedspreads
- Bilge Blower
- Bilge Pumps, automatic (3)
- Blender, electric, food and beverage
- Boat Hook, mounted
- Bow Pole
- Carpeting
- Chairs, upholstered occasional (2)
- Circuit Breaker Fusing
- Compass, illuminated, 6"
- Covers for horns, searchlight and forward deck seat
- Deck Hardware, including Mooring Bitts
- Deck Hatch, aft.
- Deck Hatch, forward, with vent
- Dishwasher
- Dock Lines, nylon
- Dockside Water Connections, port, starboard
- Dockside Wiring, 115/230V AC Single Phase 50 amp, Inlets Port and Starboard with 2 shore cables, adapters and ample 3-wire 110V cabin outlets
- Draperies
- Electronics: Installation includes Decca 101 Radar, Depth Sounder, VHF FM 25-watt Radio-Telephone, 150-watt AM Radio-Telephone, Automatic Pilot, Automatic Direction Finder, Electronic Hailer,

Sleeping Capacity . . . 11
 Length . . . 60'-10"
 Beam . . . 18'-0"
 Draft . . . 4'-7"
 Freeboard, forward . . . 8'-6½"
 Freeboard, aft . . . 6'-10"
 Height from waterline (clearance)
 with mast down . . . 17'-1"
 with mast up . . . 18'-10¾"
 to top of optional command
 bridge . . . 22'-1¾"

Weight (lbs. displacement, est.) . . .
 60' Commander . . . 80,235
 60' Motor Yacht . . . 83,170
 Headroom . . . 6'-4"
 Fuel Capacity, gallons . . . 1,000
 Fresh-water Capacity, gallons . . . 300
 Forward, Side and Aft Decks . . .
 Fiberglass



Antennas, Radio Ground, Transducers,
 Custom Cabling and Back-Lighted
 Night-Adapted Panels
 Exhaust Fan, forward lavatory
 Fire Extinguishers and Automatic CO2
 System in engine room
 Fog Bell
 Fresh Water Pressure System, Hot and Cold
 Fuel Filters
 Fuel Gauges
 Galley Exhaust Fan
 Galley with Stainless Steel Sink, 19.92 cu. ft.
 Electric Refrigerator-Freezer with Ice
 Cube Maker, 4-burner Electric Range
 and eye-level Oven
 Garbage Disposal
 Generators, 2 diesel 115/230V AC 15 kw
 with 2 Remote Start Stations and Fresh
 Water Cooling

Handrails on cabin top and bow
 Mahogany handrails with gates, side, aft decks
 Hardtop extended with Ventilating
 Windshield and Sliding Glass Side Shields
 Helmsman Seat, adjustable and Companion
 Seat, both with footrests
 Horn, air, dual trumpet
 Life Preservers (12)
 Lounge, converts to double bed
 Mast, with Anchor Light
 Mirrors in Staterooms, Salon and Lavatories
 Mufflers
 Navigation Lights, International
 Raw Water Wash-Down Outlet with pump
 Rectifier, 32V 40 amp battery charging,
 automatic
 Rudder Angle Indicator
 Searchlight, 10", remote control
 Screens

Showers (2)
 Stern Pole and Ensign
 Stereo Radio, AM, FM, FM Multiplex
 Stereo Tape Player
 Sun Lounge with cushions, forward deck
 Table, hi-lo, drop leaf
 Telephone Jacks (6)
 Televisions, color (2)
 Toilets, electric (3)
 Mast with Indicator
 Vanity, with seat
 Washer-Dryer
 Weather Cloths, fiberglass, cockpit rail to deck
 Weather Cloths, enclosure for cockpit,
 dacron and clear plastic
 Windshield Opener, electric
 Windshield Washers
 Windshield Wipers, air-driven (3)
 Zincs, electrolytic

Optional Equipment Price List

60' COMMANDER 2-478-HR-GMD 330,000.00			
60' COMMANDER MOTOR YACHT 2-478-HR-GMD 350,000.00			Total carried forward
Anchor, 35#, Danforth Hi Tensile w/Shackle. 120.00		Raft, 7 Man, Light Weight, Fiberglass, Covered Plastic Foam Chocked on Hardtop. 270.00	
Anchor, 40#, Danforth, w/Shackle, In Addn. to Standard. 84.00		Shaft, Propeller, Tail, TS, 478 H.P. GMD Engs., Each Extra. Store In Engine Room. 290.00	
CAPAC Antielectrolysis System In Place of Zincs. Later		Onan Sound Shield, Diesel Light Plant Only, Each. 280.00	
Boat Hook and Clips, 9 ft., 0 in. In Addition to Standard. 25.00		Monomatic Toilet System, Per Boat, Dockside and Overboard Discharge, Model 1-S, 32V, In Place of Std. 1025.00	
Chlorinator for Electric Toilet, Electrochemical, 32V. 225.00			
Davits, Stern Dinghy w/Tackle, Walstrom. 470.00		Wiring, Two 115V AC, 30 Amp., 3-Wire Inlets, 50 ft., 3-Cond. Ship to Shore Cable w/Adapter and 4 Place Selector Switch Panel. 600.00	
Fenders, Par 10 in. x 26 in. Air Filled, Set of 2 w/Line and Pump. 74.00			
Line, Anchor w/Thimble $\frac{3}{4}$ in. x 150 ft. Nylon In Addition To Std. 120.00		Wiring, Each Additional 15 Amp. Duplex Outlet. 30.00	
Line, Anchor w/Thimble $\frac{3}{4}$ in. x 200 ft. Nylon, In Addition to Std. 155.00		Wiring, Duplex Waterproof Outlet, Each. 36.00	
Lights, (2) Morse Docking, Bow, 32V, P&S. 270.00		Wiring, 50 ft. 4-Cond. Ship to Shore Cable Extension. 165.00	
Light, Reading, Swivel Type. 37.00		Shower, Fwd. Head	
Lock, Barrel, Door or Drawer. 32.00			
Propellers, TS, 478 H.P. GMD Engs., Extra Pair, Store in Engine Room. 658.00			
Subtotal			Grand Total

All prices are F.O.B. factory. Prices and specifications contained in the literature are based on the latest product information available at the time of publication approval. The right is reserved to make changes at any time without notice in prices, colors, materials, equipment, specifications and models and also to discontinue models, equipment and accessories pictured but not included in the list of standard equipment. Items will be furnished at extra cost if available irrespective of the place of manufacture. The right is reserved to ship from any Chris-Craft factory. All orders accepted subject to prices prevailing at time of shipment. Orders are subject to acceptance only at Chris-Craft Corp., Pompano Beach, Florida 33061.