

# *Chris-Craft Luxury Yachts*



# *60' Commander*



# 60' Commander

Not many years ago, it was thought impossible to build a fiberglass yacht so large, so lavish, so complete as the 60' Commander. Because of Chris-Craft technology and imagination, it is a reality.

Everything you need to put to sea, you have plus accommodations for eleven.

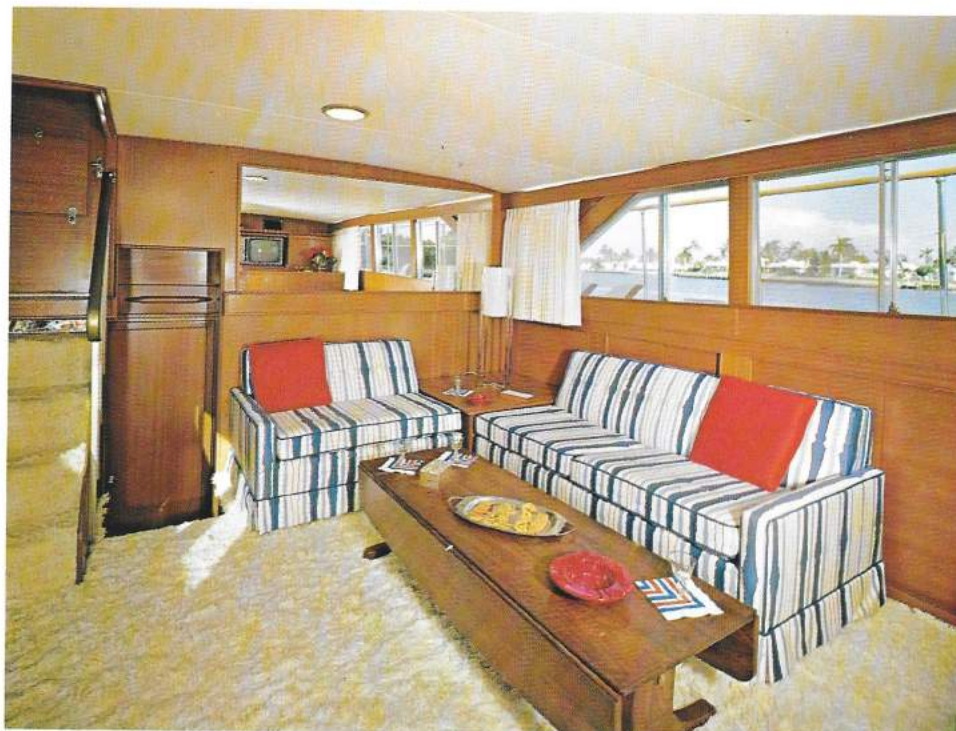
For truly extended cruising, the standard Chris-Craft Advanced Integrated Marine Electronics System comes with radar and all are controlled from a space-age Command Console.

Below decks, the accommodations are cheery and modern as only Chris-Craft knows how to provide — with handsome, brightly-colored carpeting, draperies, bedspreads, and furniture that's comfortable yet totally practical.

Aft, the owner's stateroom befits his status. It has its own color TV, bathroom with combination shower/bathtub, acres of drawer space, two huge beds with upholstered headboards, a dresser, full-height wardrobe and a vanity with make-up lights. The stateroom is air-conditioned and heated as is the rest of the yacht.

The guest staterooms share their own lavatory with shower. Each one has a large hanging locker and dresser, plus mirrors and locker lights. Forward is another stateroom for two, with lavatory, electric toilet, and room for an optional shower.

The salon is a sea-going living room. There are two lounge chairs, a cabined swivel color TV, and eight-track stereo tape deck with four speakers (two for the main salon, two for the pilothouse).



Salon looking aft



Salon looking forward

A hi-lo table for coffee or cocktails, and sectional lounge that converts to sleep two. Even the bar on the aft deck has an ice cube maker, glass and bottle racks and sink.

The galley is immense and complete. It has double stainless steel sinks, a home-sized refrigerator with freezer and automatic ice cube maker, a four-burner electric range with eye-level oven, and an exhaust fan to blow away any stray cooking odors. Under the countertop, there's also a full-size dishwasher—plus extra stowage space—dish and pan lockers, and a garbage disposal. There's even a washer/dryer for clothes in the forward stateroom.

The decks are all wide, and well protected. On the forward deck is a sun lounge with foam cushions and flush dunnage lockers.

Lighting is complete, including gangway lights, fluorescent inboard lights with dimmers, and reading lights conveniently located.

The 60' Commander is total luxury and our finest fiberglass vessel — the ultimate expression of Chris-Craft technology, yacht design expertise, and electronic know-how.

## SPECIFICATIONS

Sleeping Capacity .....	11
Length .....	60'10"
Beam .....	18'-0"
Draft .....	4'-7"
Freeboard, forward .....	8'-6½"
Freeboard, aft .....	6'-10"
Height from waterline (clearance)	
with mast down .....	17'-1"
with mast up .....	18'-10¾"
to top of optional command bridge.....	22'-1¾"
Weight (lbs. displacement, est.)	
60' Commander .....	80,235
Fuel Capacity, gallons .....	1,000
Fresh-water Capacity, gallons .....	300
Forward, Side and Aft Decks .....	Fiberglass



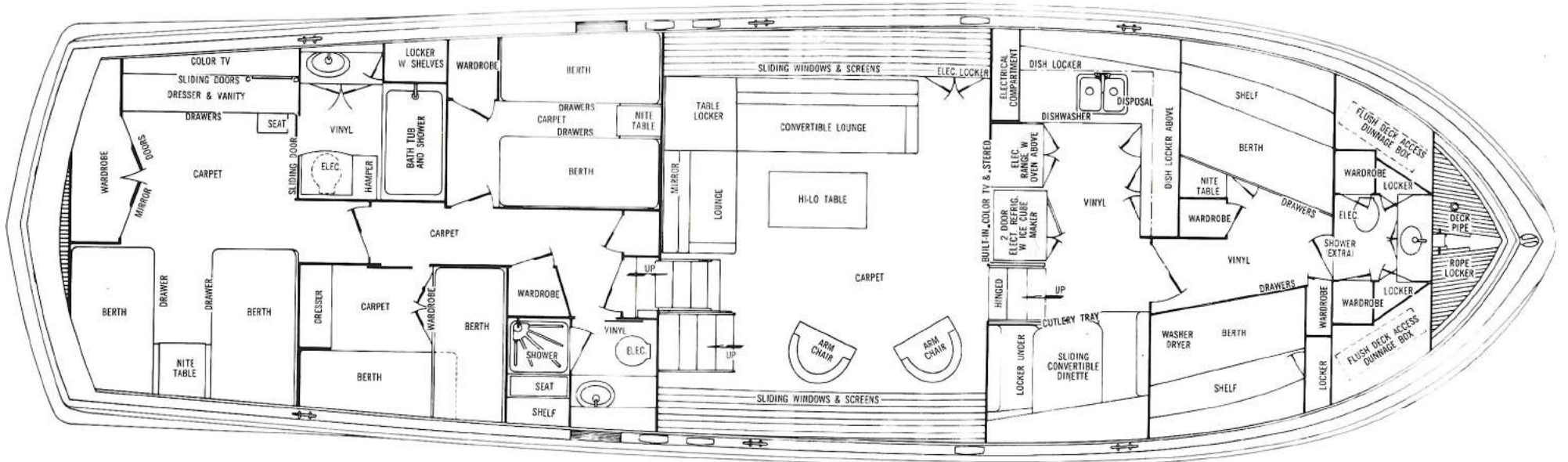
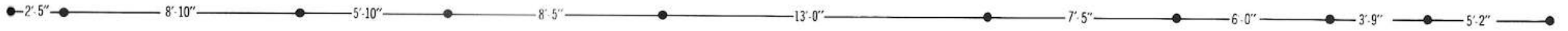
Master stateroom



Guest stateroom



Galley





## 60' Commander

### STANDARD EQUIPMENT

Air Compressor • Air Conditioning with reverse cycle heating • Alarm System, engine oil and water, audible and visual • Anchor, Chain, Deck Pipe, Hawse Pipe and Electric Windlass • Bar, aft deck, with Sink, Ice Maker, Storage • Bathing with Shower • Battery Disconnect Switches • Battery Paralleling Switch • Bedspreads • Bilge Blower • Bilge Pumps, automatic (3) • Boat Hook, mounted • Bow Pole • Carpeting • Chairs, upholstered occasional (2) • Circuit Breaking Fusing • Compass, illuminated, 6" • Covers for horns, searchlight and forward deck seat • Deck Hardware, including Mooring Bitts • Deck Hatch, aft • Deck Hatch, forward, with vent • Dishwasher • Dock Lines, nylon • Dockside Water Connections, port, starboard • Dockside Wiring, 115/230V AC Single Phase 50 amp. Inlets, Port and Starboard with 2 shore cables, adapters and ample 3-wire 110V cabin outlets • Draperies • Electronics: Installation includes Decca 101 Radar, Depth Sounder, VHF FM 25-watt Radio-Telephone, 150-watt AM Radio-Telephone, Automatic Pilot, Electronic Hailer, Antenna, Radio Ground, Transducers, Custom Cabling and Back-Lighted Night-Adapted Panels • Exhaust Fan, forward lavatory • Fire Extinguishers and Automatic CO2 System in engine room • Fog Bell • Fresh Water Pressure System, Hot and Cold • Fuel Filters • Fuel Gauges • Galley Exhaust Fan • Galley with Stainless Steel Sink, 19.92 cu. ft. Electric Refrigerator-Freezer with Ice Cube Maker, 4-burner Electric Range and Eye-level Oven, Blender (electric, food and beverage), Garbage Disposal • Generator, diesel 115/230V AC, 30 kw with 2 Remote Start Stations and Fresh Water Cooling • Handrails on cabin top and bow • Mahogany handrails with gates, side, aft decks • Hardtop extended with Ventilating Windshield and Sliding Glass Side Shields • Helmsman Seat, adjustable and Companion Seat • Horn, air, dual trumpet • Life Preservers (12) • Lounge, converts to double bed • Mast, with Anchor Light • Mirrors in Staterooms, Salon and Lavatories • Mufflers • Navigation Lights, International • Raw Water Wash-Down Outlet with pump • Rectifier, 32V 40 amp battery charging, automatic • Rudder Angle Indicator • Searchlight, 10", remote control • Screens • Showers (2) • Stern Pole and Flag • Stereo Radio, AM, FM, FM Multiplex • Stereo Tape Player • Sun Lounge with cushions, forward deck • Table, hi-lo, drop leaf • Telephone Jacks (3) • Television, color (2) • Toilets, electric (3) • Trim Control with Indicators • Vanity, with seat, mirror, lights • Washer-Dryer • Weather Cloths, fiberglass, cockpit rail to deck • Weather Cloths, enclosure for cockpit, dacron and clear plastic • Windshield Opener, electric • Windshield Washers • Windshield Wipers, air-driven (3) • Zincs, electrolytic.



*60' Commander Motor Yacht*



# 60' Commander

## Motor Yacht

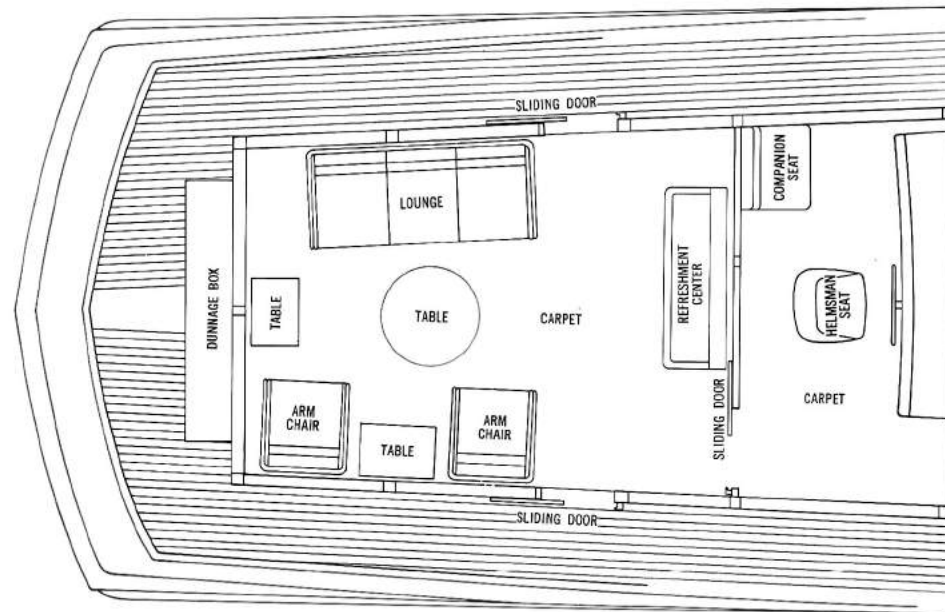
Sister ship to the 60' Commander is the luxurious 60' Motor Yacht, identical to the 60' Commander except the Motor Yacht features an air conditioned enclosed aft deck with panoramic windows. Walk-around side and aft decks are provided for comfort and ease of handling lines. The enclosed aft deck is carpeted and furnished with a lounge, chairs and table.



Deckhouse looking aft

### SPECIFICATIONS

Sleeping Capacity .....	11
Length .....	60'-10"
Beam .....	18'-0"
Draft .....	4'-7"
Freeboard, forward .....	8'-6½"
Freeboard, aft .....	6'-10"
Height from waterline (clearance)	
with mast down .....	17'-1"
with mast up .....	18'-10¾"
to top of optional command bridge.....	22'-1¾"
Weight (lbs. displacement, est.)	
60' Commander Motor Yacht .....	83,170
Fuel Capacity, gallons .....	1,000
Fresh-water Capacity, gallons .....	300
Forward, Side and Aft Decks .....	Fiberglass



MOTOR YACHT DECKHOUSE ARRANGEMENT